

SIMRANGER

GSM 2

Analogue and Digital Mirrored Comms

WHAT IS THE SIMRANGER GSM2?

Enables **up to 7 x 4-20ma input or outputs** (or a combination of either) and **up to 4x digital input and 4 x digital output signals** plus one **system fail alarm relay** to be transmitted back to a 'mirrored' paired second GSM2 unit via 'roaming' SIM cards.

All ordered pre-programmed up ready to simply fast fit.

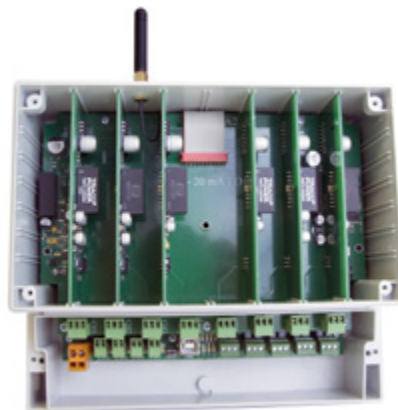
These units have the ability to transmit analogue and digital data both ways. The signals can then be used to remotely monitor analogue levels, flows and analyser monitors etc along with controlling pumps and valves etc.

Other options available are data sent to a web page that can be custom built to act as a set of SCADA pages as a system overview. This means that you only need to use one GSM2 to create a mini SCADA package. Add even further GSM2's to create a whole network of remote monitoring and controlling telemetry outstations.

The **roaming SIM** cards supplied can connect to all of the major mobile phone networks (EE, Vodafone, O2 and Three) in the UK along with their partners in the rest of Europe and the world. Units select and utilise the most stable network provider. This revolutionary '**roaming comms**' system provides 'bump less' transfer technology ensuring the reliability of the signal transmission.

This technology was field tested between one of the UK's toughest comms paths on a remote Peak District hillside surrounded by a horseshoe of hills at the foot of the Pennine Way making radio communication technology impossible. There is only minimum GSM signal on any network here.

This keeps the Edale area water supplies secure by keeping the service reservoir topped up by controlling pumps two further valleys away! Some feat for this technology one would say.



GSM2 Features

- > Mirrors up to 7 x input or output 4-20ma signals
- > Mirrors up to 4 x input and output digital signals
- > System fail relay
- > SIM card GPRS roaming comms on all networks (Vodafone, O2, EE, Three)
- > Low powered 10-30v DC operation
- > Designed for remote data site comms
- > Fast Fit
- > Direct private wire replacement system
- > Designed to work via solar panels when no mains power available
- > Built in power shut down ← 10v dc
- > Basic unit has 1 x 4-20ma analogue input, 1 x 4-20ma output, 1 x digital input, 1 x digital output relay and 1 x fail relay
- > Fully rack mounted internally expandable
- > Comms fail safes of Fail Low, Fail High or Hold after an adjustable timer has expired
- > Fully re-establishes on comms health returning.
- > Programmed using a standard USB 2 comms cable
- > Utilises Windows Terminal programme to set up basic simple programme and overview of signals and networks.
- > No calibration required
- > Options : Antenna for remote mounting
- > Quad band
- > Standard SIM holder
- > IP65

FAQ

- > **So I need a SIM card. Isn't that expensive?**

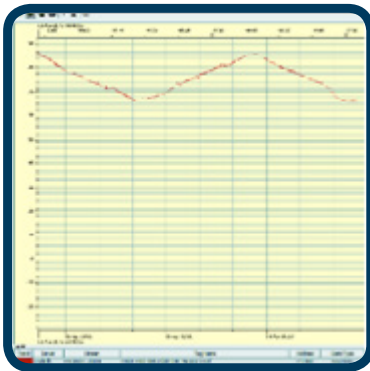
No, If you use our website and data services, the SIM costs are inclusive and relatively low.

Contact **SIMRANGER...**

SIMRANGER

GSM 2

Analogue and Digital Mirrored Comms



RESERVOIR LEVEL VIA REMOTE GSM2 COMMS



GSM2 Specification

Temperature Range

-20 to +85 °C

Inputs/ Outputs Programming

- USB 2.0
- Connector type B
- Virtual Com Port

Digital I/P

- Volts free

Digital O/P

- Change over relay
- 5A@30VDC
- 10A@250VAC

Analogue input

- 0-22mA
- Isolated = → 150VAC

Wireless

Connectivity

- Dual-Band UMTS: 900 and 2100MHz
- Dual-Band GSM: 900 and 1800MHz
- SMS

SIM

- Standard (micro and nano with adapter)

Antenna

- SMA connector

Enclosure

Dimensions:

- Length: 213mm 8.4inches
- Width: 185mm 7.3inches
- Height: 102mm 4.0inches
- Ingress Protection (EN 60529): IP65

Contact SIMRANGER...